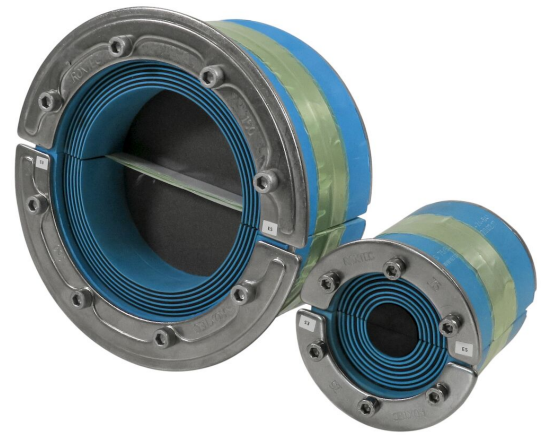




Bague Roxtec RS EMC

Solution d'étanchéité pour la CEM, pour câble ou tuyauterie unique.

La bague Roxtec RS EMC assure la compatibilité électromagnétique. Elle est conçue pour un passage unique de câble ou de tuyauterie et s'insère dans une douille en métal. La bague se compose de deux moitiés avec des couches pelables, pour s'adapter à des câbles et des tuyauteries de différentes tailles. Il existe une version ES pour le blindage électromagnétique et une version PE qui offre une protection contre les perturbations conduites. Le design de la bague facilite son installation autour de câbles et des tuyauteries existants. Utilisez le bâtonnet de test Roxtec EC pour obtenir une indication des performances électriques des installations de passage de câbles Roxtec BG™ ou ES.



- Résistant aux rongeurs
- Installation facile et rapide

Caractéristiques du produit



Coupe-feu



Étanche à l'eau



Étanche au gaz



Protection IEM

Structure d'installation



Métal

Type de fixation



Douille existante

Classements et certificats

Feu

- CLASSE A conformément au code FTP IMO 2010
- Classement E/EI selon EN 13501
- Classement F/T selon UL 1479
- CLASSE H selon IMO 2010 FTP Code + Courbe de charge calorifique HC
- Jetfire selon ISO 22899-1 et OTI 95634

Étanchéité

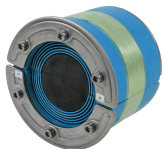
- Gaz: 2,67 bars (catastrophique)
- Eau: 4 bars (catastrophique)

Supports

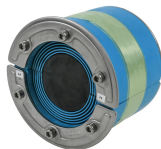
- Blindage électromagnétique
- Compensation de potentiel

Éléments d'étanchéité

Éléments d'étanchéité



Bague RS ES



Bague RS PE



Lubrifiant Roxtec

Accessoires



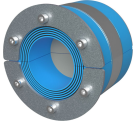
Accessoires ES et BG

Pour plus d'informations, veuillez consulter [roxtec.com](https://www.roxtec.com).

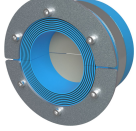


Kits de passage préconfigurés

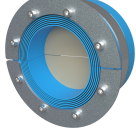
mm/kg



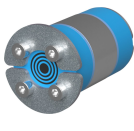
RS 100 ES AISI316 WOC



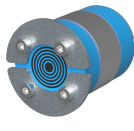
RS 125 ES AISI316 WOC



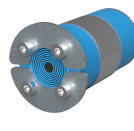
RS 150 ES AISI316 WOC



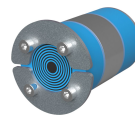
RS 25 ES AISI316



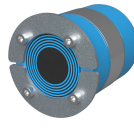
RS 31 ES AISI316



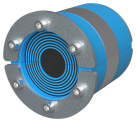
RS 43 ES AISI316



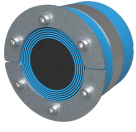
RS 50 ES AISI316



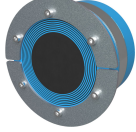
RS 68 ES AISI316



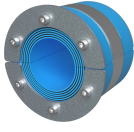
RS 75 ES AISI316



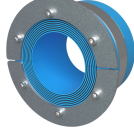
RS 100 ES AISI316



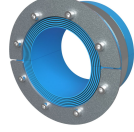
RS 125 ES AISI316



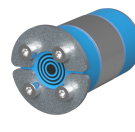
RS 100 PE AISI316 WOC



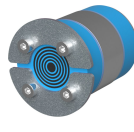
RS 125 PE AISI316 WOC



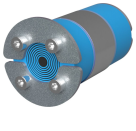
RS 150 PE AISI316 WOC



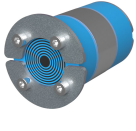
RS 25 PE AISI316



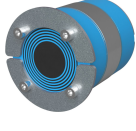
RS 31 PE AISI316



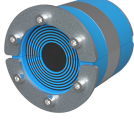
RS 43 PE AISI316



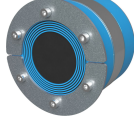
RS 50 PE AISI316



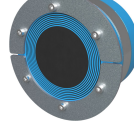
RS 68 PE AISI316



RS 75 PE AISI316



RS 100 PE AISI316



RS 125 PE AISI316

Titre	Configuration	Dimensions d'ouverture Ø	Poids	N° art.
RS 100 ES AISI316 WOC	1x (48.0-70.0)	100 - 102	0.8	ERS0001001121
RS 125 ES AISI316 WOC	1x (66.0-98.0)	125 - 127	1.2	ERS0001251121
RS 150 ES AISI316 WOC	1x (93.0-119.0)	150 - 152	1.6	ERS0001501121
RS 25 ES AISI316	1x (3.6-12.0)	25 - 26	0.04	ERS0100251121
RS 31 ES AISI316	1x (4.0-17.0)	31 - 32	0.11	ERS0100311121
RS 43 ES AISI316	1x (4.0-23.0)	43 - 45	0.24	ERS0100431121
RS 50 ES AISI316	1x (8.0-30.0)	50 - 52	0.32	ERS0100501121
RS 68 ES AISI316	1x (26.0-48.0)	68 - 70	0.5	ERS0100681121
RS 75 ES AISI316	1x (24.0-54.0)	75 - 77	0.6	ERS0100751121
RS 100 ES AISI316	1x (48.0-70.0)	100 - 102	1	ERS0101001121
RS 125 ES AISI316	1x (66.0-98.0)	125 - 127	1.6	ERS0101251121
RS 100 PE AISI316 WOC	1x (48.0-70.0)	100 - 102	0.8	PRS0001001121
RS 125 PE AISI316 WOC	1x (66.0-98.0)	125 - 127	1.2	PRS0001251121
RS 150 PE AISI316 WOC	1x (93.0-119.0)	150 - 152	1.6	PRS0001501121
RS 25 PE AISI316	1x (3.6-12.0)	25 - 26	0.04	PRS0100251121
RS 31 PE AISI316	1x (4.0-17.0)	31 - 32	0.06	PRS0100311121
RS 43 PE AISI316	1x (4.0-23.0)	43 - 45	0.24	PRS0100431121
RS 50 PE AISI316	1x (8.0-30.0)	50 - 52	0.32	PRS0100501121
RS 68 PE AISI316	1x (26.0-48.0)	68 - 70	0.5	PRS0100681121
RS 75 PE AISI316	1x (24.0-54.0)	75 - 77	0.6	PRS0100751121
RS 100 PE AISI316	1x (48.0-70.0)	100 - 102	1	PRS0101001121
RS 125 PE AISI316	1x (66.0-98.0)	125 - 127	1.6	PRS0101251121



The product information provided by Roxtec does not release the purchaser of the Roxtec system, or part thereof, from the obligation to independently determine the suitability of the products for the intended process, installation and/or use.

Roxtec gives no guarantee for the Roxtec system or any part thereof and assumes no liability for any loss or damage whatsoever, whether direct, indirect, consequential, loss of profit or otherwise, occurred or caused by the Roxtec systems or installations containing components not manufactured by an authorized manufacturer and/or occurred or caused by the use of the Roxtec system in a manner or for an application other than for which the Roxtec system was designed or intended.

Roxtec expressly excludes any implied warranties of merchantability and fitness for a particular purpose and all other express or implied representations and warranties provided by statute or common law. User determines suitability of the Roxtec system for intended use and assumes all risk and liability in connection therewith. In no event shall Roxtec be liable for indirect, consequential, punitive, special, exemplary or incidental damages or losses.

The Roxtec products are offered and sold in accordance with the conditions of the Roxtec General Terms of Sales. The latest version of the Roxtec General Terms of Sales can be downloaded from <https://www.roxtec.com/en/about-us/about-roxtec/general-terms-of-sales/>

We reserve the right to make changes to the product and technical information without further notice. Any errors in print or entry are no claims for indemnity. The content of this publication is the property of Roxtec International AB and is protected by copyright.

This document was generated on: 2024-04-17